



Dry Thermal Imager

SP3000+

Overview

SP3000+ is a dry imager designed to output information processed through DICOM network protocol.

SP3000+ supports 4 film sizes.
8"x10", 10"x12",
11"x14" and 14"x17"
Achieve the convenience of
multiple sizes.

SP3000+ boasts high quality images when
used with **SUPiA gram**



COMPUTED
RADIOGRAPHY
SUPiA
ELF OF FOREST

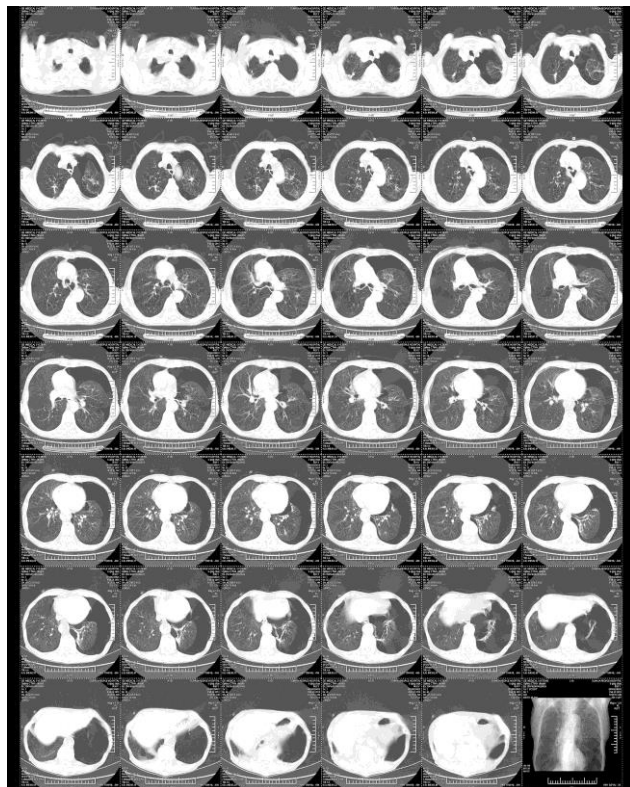


Applications

SP3000+ takes advantage of the SUPiA gram's innovative simplicity and convenience, resulting in high precision and image quality.

Shortcut to get **DIGITAL X-RAY**

Sample Images_(Global Standard Level)



SP3000+ Specifications

Print Technology	Direct thermal (dry, daylight-load film)
Spatial Resolution	320dpi (12.6 pixels/mm)
Throughput	14"x17" >= 50 sheets/h 8"x10" >= 70 sheets/h
Grayscale Contrast Resolution	14 bits
Film Transferring Method	Rubbing
Film Tray	Two supply tray, 200-sheet capacity total
Film Sizes	8"x10", 10"x12", 11"x14", 14"x17"
Applicable film	Medical Dry Thermal Film (blue or clear base)
Interface	10/100/1000 Base-T Ethernet(RJ-45)

Network Protocol	Standard DICOM 3.0 connection
Image Quality	Automatic calibration Using built-in densitometer
Control Panel	Touch Screen, Online Display, Alert, Fault and Active
Power Supply	100-240VAC 50/60Hz 600W
Weight	50Kg
Operating Temperature	5°C-35°C
Storage Humidity	30%-85%
Storage Temperature	-22°C-50°C
Base Holding	Optional

