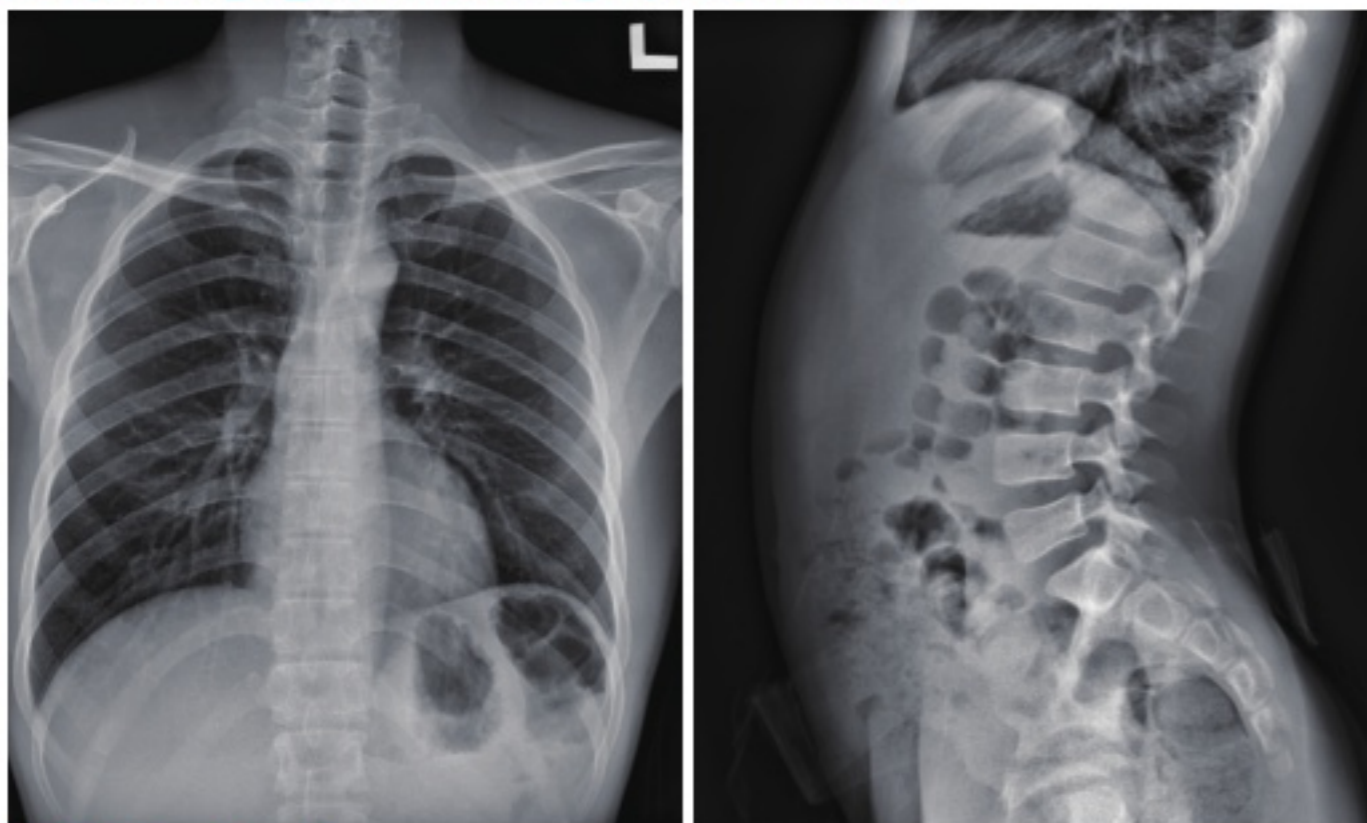


Sample Images_ Optimized Image quality in Clinic



SUPiA Specifications

Cassette	SUPiA CR Cassette 14 x 17 (inch)
	SUPiA CR Cassette 10 x 12 (inch)
	SUPiA CR Cassette 18 x 24 (cm)

Slots	Single Cassette feed
--------------	----------------------

Dimensions (W x D x H)	436 x 636 x 196mm
-------------------------------	-------------------

Weight	21.5kg (47.4lbs)
---------------	------------------

Grayscale Resolution	Acquisition : 16 bits per pixel
	Display : 12 bits per pixel

Power Supply Conditions	Single Phase 50 ~ 60Hz
	AC 90 ~ 264V

Network	100 MBit
----------------	----------

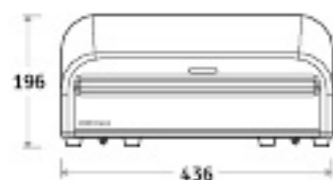
PC Connection	USB 2.0
----------------------	---------

Computer Min. requirements	OS : Win 7 or 10
	CPU : Intel i3
	RAM : 4GB
	HDD : 500GB

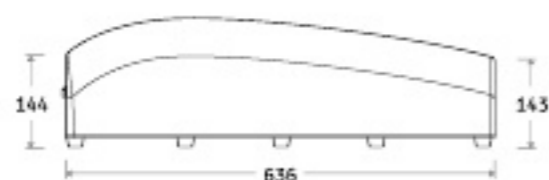
Operating conditions	Monitor : More than 17" LED Monitor
	Temperature : 10 ~ 30°C

Operating conditions	Humidity : 15 ~ 82% RH
-----------------------------	------------------------

SUPiA Dimensions



Front View



Side View



SIGNERS CO., LTD.

E-mail : supia@signers.co.kr



COMPUTED
RADIOGRAPHY
SUPiA
ELF OF FOREST

Shortcut to get **DIGITAL X-RAY**



Overview

SUPiA offers such a better clinic environment with no chemicals, ideal space, high resolution image quality and affordability.

Compact & Lightweight

- The length is just 636mm, so you can put it on every normal desk
- It weighs only 21.5kg(47.4 lbs)

Durability

- Extremely simple structure design
- Cassette sorter protects the inside of scanner from dust

Authentic Rigid Type among clinic CRs

- No damage or scratches to the image plate during scanning & erasing
- Scan & Erase without roller
- No cut-off image in winter or cold conditions

Cassette

Strong structure

- Strong enough against external impact
- Able to bear up to 150kg of weight on cassette

Featherlight

- 14 x 17" :2.1kg / 10 x 12" :1.3kg / 18 x24cm : 0.67kg

Dust free & Easy cleaning

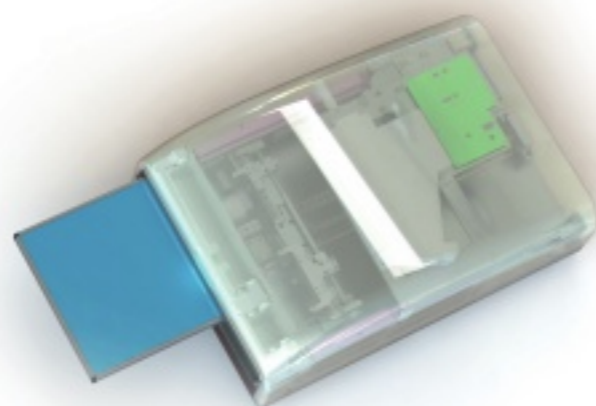
- Easy to clean up dust on IPs
- Prevent dust from outside

User Friendly design

- Barcode label
- Various colors
14 x 17(Green), 10 x 12(Blue), 18 x 24cm(Pink)

Barcode System

- Automatic cassette size recognition and scanning



Overview (SUPiA gram - Console software)

SUPiA gram, our console software, is simple, fast, stable and compatible.

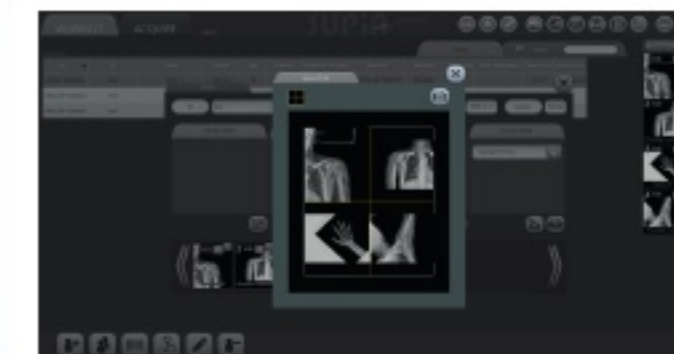
Emergency study

- Instantly scan in Worklist without creating patient information
- Drag & Drop scanned image to patient list



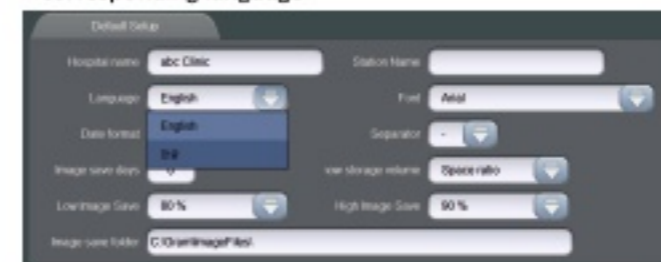
Compatibility

- Can connect with any DICOM printer and Paper printer
- Up to 4 divisions possible



Easy multilingual support

- It can be easily applied by changing the English list to the corresponding language

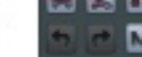


Simplicity

- Easily understand the shooting direction by displaying the tube label as the shape of the cassette plate

Plenty of editable Tools

- Flip / Rotate
- Distance
- Angle
- Rectangle
- Marking
- Pan / Zoom
- Simple image processing



Intuitive UI



Lightweight and Robust

- Runs naturally on low-end computers and monitors

Preview

- Can see real-time scanned image
- Decide immediately to repeat

Special Tools

- Rotate to the desired angle



- Auto Stitching (coming soon)
- Client Viewer (coming soon)