

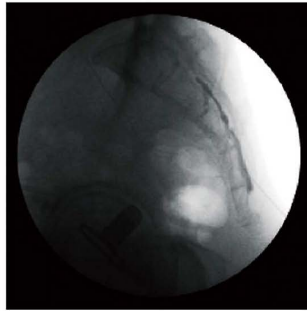
**High-quality Imaging**



Spinal Fusion



Spine Root Block



Caudal Block



Shoulder Arthrography

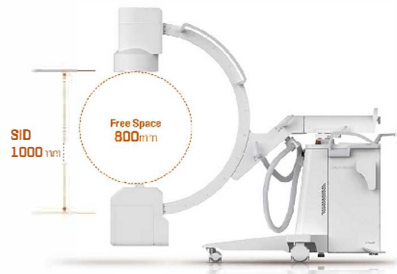


Metacarpal Bone ORIF



Ankle ORIF

**Flexible Movement**



# KMC-650P

MOBILE SURGICAL FLUOROSCOPIC  
X-RAY SYSTEM

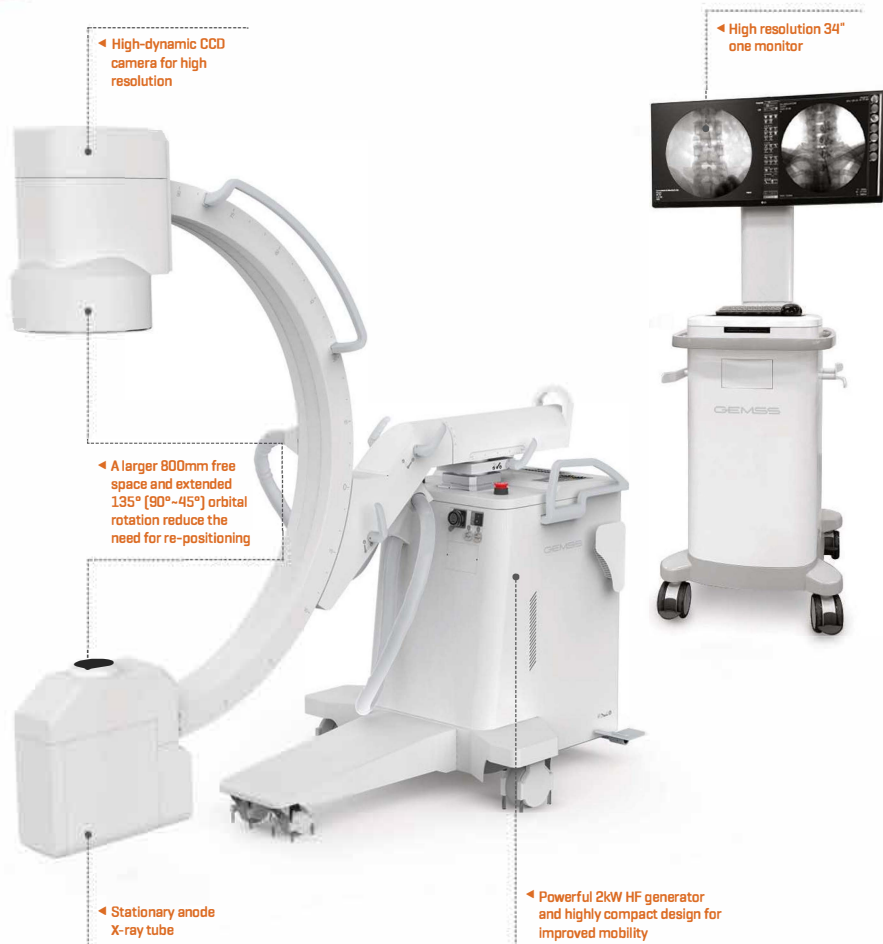


Imaging Innovation

**GEMSS**  
HEALTHCARE

# High Quality & Economical Solution

KMC-650P is a compact and economical C-arm system suitable for various applications in neurosurgery, pain management, orthopedics and emergency room. With high-dynamic 1K CCD Camera, KMC-650P offers excellent quality of high resolution images to support safe operation and precise diagnosis. Also KMC-650P's 'Function key', which is a pre-set of radiation doses per aiming area and image calibration value for specific operation, allows practitioners to achieve best image quality in various clinical applications. Its compact design improves space-efficiency to set up operation room and wide C-arc increases flexibility of the operation table. Wide free space and orbital rotation allows easy patient access, decrease re-positioning, and improve operators' movement.



## Optimized Workflow

- Compact design provides more free space for operation
- Capable of long time and multi-frame recording
- Supports multi-selection of frames/sec (max 30 frame)

- \* DAP (Dose Area Product)
- \* Thermal Printer
- \* Cassette Holder
- \* Grid
- \* Hand switch
- \* indicates optional item

## Specifications at a Glance



2kW, High Frequency Generator



1K x 1K High Resolution CCD Camera



135° Wide Orbital Rotation with Large SID Distance



Control / Optimize Radiation Dose  
-Virtual collimator  
-Pulse mode  
-Air Kerma  
-Laser guide



High Resolution 34" One Monitor



Easy Archiving and Documentation  
-DICOM 3.0  
-CD/DVD Burner  
-Thermal Printer  
-USB Port



Monotank Type Tube



Three-field 9" Image Intensifier

## Smart CX-View



Database Management  
-More convenient search & save capabilities  
-Manage patient information  
-Before & after surgery comparison



Large capacity storage (HDD: 500GB)  
-Until 99case per study  
-More than 204,000 still images / 1,100 cine image (at 180 frame cine)



Versatile Diagnostic Tools  
-Zoom, contrast, reverse, invert  
-Filtering, edge enhancement  
-Annotation



PACS Connectivity with DICOM 3.0  
-Store and print, modality worklist management  
MPPS, storage commitment, and import & export

